



Generating
Movement
Efficiently

YELLOWTAIL

Lynch Electric 2.5Kw Direct Drive Marine System



YELLOWTAIL

KEY FACTS

- 2.5Kw output power with a peak of 6Kw
- 24v input power
- Suitable for a range of vessel types from Pleasure, Leisure and Hire craft

| Yellowtail System Output Kw | Combustion Engine Size Replacement | Craft Size |
|-----------------------------|------------------------------------|------------|
| Yellowtail 2.5Kw | 5-10hp | 15-25ft |



CANAL

RIVER

LAKE

SEA

SYSTEM FEATURES

Consistent Reliability - A Lynch electric motor starts every time, just turn the key, adjust the throttle and go. Giving you the security and comfort knowing you have a reliable engine while on the water.

Power Distribution - No need for pre-heating, the power is immediately available. With a Lynch motor the power kicks in straight away, making harbour manoeuvrability easier and more accurate.

Environment and Comfort - Quiet and Clean. The Lynch motor runs extremely quietly giving you a more peaceful experience and is free from exhaust fumes providing you with a clean engine room. Overall making the on-board environment more pleasant and relaxing. The Lynch electric system has no impact on the water environment either making it an excellent choice for emission restricted waterways.

Light Weight - The weight of the Lynch electric system is very low compared to traditional engines and batteries can be distributed for better weight optimization, making the steering more controllable.

Low Maintenance Costs - The only parts that require visual maintenance checks are the brushes and drive belts. The brushes have a life time of upto 7000 hours if maintained and the gear belt 3000 hours, both parts are easy and inexpensive to replace.

Easy Installation - The Lynch marine drive is designed to be easy to install with the controller, throttle and display connected by a 'plug and sail' system. In addition due to the motor and gearing consoles low weight, the system is easy to align without the need for heavy lifting equipment and can be installed in 1 day providing mounting preparation has been completed.

Simplicity - The easy to use system means the Yellowtail is perfect for hire boats, customers can use the system with basic instruction and it can be maintained by staff without mechanical training.

All Lynch Marine Drive Systems include the following:

- Electric DC Motor - LEM200-D135 as standard data sheet available
 - Motor Frame / Direct Drive & Gearing Assembly
 - Controller Assembly, using sigma controller programmed for the systems use.
 - Leads and Installation Manual
 - Display - Standard Basic, BMV or Sigma options
 - 2 Year Warranty - extendable motor warranty when your motor is serviced by us, valid on the motor only.
 - Throttle - Standard Top / Side Mount or ZF throttle option
- Contact us for more information.



Generating
Movement
Efficiently

YELLOWTAIL

Lynch Electric 2.5Kw Direct Drive Marine System



Technical Specification

| | | | |
|---------------------------|--------------|------------------------------|----------|
| Motor Type | LEM 200-D135 | Peak Current | 250 Amp |
| Voltage | 24 V | Peak Power | 6 KW |
| Current | 120 Amp | Peak Torque | 35 Nm |
| Power Output | 2.5 KW | Reduction Gearing Standard | n/a |
| Average Efficiency | 88% | Reduction Gearing Options | n/a |
| Battery Recharge Function | NO | Standard RPM Propeller Shaft | 1080 RPM |
| Rated Speed Engine | 1080 RPM | Optional RPM Propeller Shaft | n/a |
| Rated Torque | 16 Nm | Weight of Motor and Console | 14 kg |
| Speed Constant | 45 RPM/V | Weight of Motor Control Box | 12 kg |

Controller Assembly

| Controller Box Sizes | Dimensions (mm) | | |
|---------------------------------------|-----------------|-----|--------|
| | A | B | C |
| Small - Yellowtail | 362.45 | 362 | 156.53 |
| Medium - Marlin 5 & 8 | 362.45 | 410 | 156.53 |
| Large - Marlin 13 / Swordfish 16 & 26 | 362.45 | 505 | 156.53 |



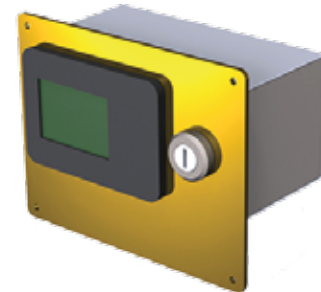
Basic Display

System ON/OFF & direction switches with battery display. stainless steel back plate



BMV 700 Intelligent Display

Key ignition with voltage, battery capacity and available range. *now with stainless steel back plate



Sigma Display

Key ignition with battery capacity levels throttle settings and programme codes for controller



Standard Throttle

One direction setting or neutral position with forward and reverse. Can be top or side mounted.



ZF Throttle

Neutral with forward and reverse only.

CONTACT US FOR UK AND UAE SALES

CONTACT US FOR INTERNATIONAL SALES



Generating
Movement
Efficiently

LYNCH MOTOR COMPANY LTD
Units A1 & A2 Flightway Business Park,
Dunkeswell, Honiton, EX14 4PE

Tel: 0044 (0)1404 892940
E-mail: info@lynchmotors.co.uk



E-mail: sales@lmcmarine.com
Tel: +45 4059 2201
Web: www.lmcmarine.com

More information and case studies available on our website.

International sales excluding the UK and the United Arab Emirates

www.lynchmotors.co.uk
More information and case studies available on our website